

Product parameters

Product Name: humidifier Model: DEM-F327W
 Rated Power: 28W Capacity: 5.0L
 Rated Voltage: 220-240V~
 Rated Frequency: 50-60Hz
 Machine Size: 220*220*285mm
 Packing List: the complete machine, the manual, the certificate

Working principle

The Deerma humidifier uses the principle of ultrasonic waves to generate 1.7 million high-frequency oscillations per second, atomize water into ultra-fine particles of 1 - 5 microns, and diffuse mists into the air via a wind-driven device to achieve the purpose of evenly humidifying the air. The humidifier can maintain ideal humidity in the living room and prevent static electricity.

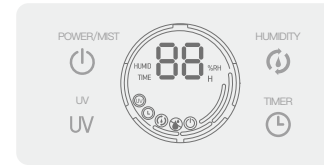
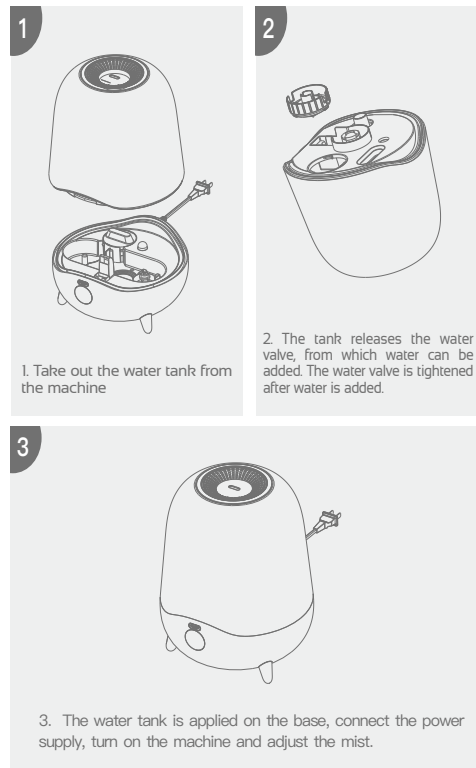
Safety Precautions

1. Welcome to use Deerma humidifier, please read through this manual before use.
2. Please use the voltage and frequency as specified for this appliance: 220-240V~ 50-60Hz
3. Do not dismantle, repair or retrofit the appliance arbitrarily.
4. If the power cord is damaged, for the sake of safety, it must be replaced by the manufacturer or its maintenance center or equivalent maintenance center or full-time personnel.
5. If any abnormal phenomenon appears, please unplug it immediately. It must be repaired by the manufacturer or its maintenance center or equivalent full-time personnel.
6. Sweep up dust on the power plug on a regular basis.
7. Before cleaning or moving, please first switch off the power and unplug it.
8. When unplugging it, please firmly hold the power plug, do not drag and tear the power lead.
9. Do not move or turn over the appliance when there is power or water.
10. Do not touch the water and parts in the sink when there is power.
11. When the machine is working, do not cover the air inlet and mist outlet with towels and other articles.
12. This is not a toy. To avoid accidents, please keep it far away from babies and children. Do not put it in a crib, stroller or playpen. Do not let babies and children play and use the machine.
13. It is forbidden to use the machine on a slanted table top. Instead, it should be placed in a flat and solid place.
14. Please do not add flavors or similar substances that are not produced by or under the supervision of our company to the water sink and tank in the machine.
15. Please do not use it in the kitchen, keep it away from heat sources, avoid direct sunlight, and keep it at 2 m away from furniture, other household appliances, avoid getting damp.
16. Please unplug it when filling water.

Tips:

About how to use this appliance: remove the nozzle cover before adding water to the tank, and turn the tank upside down, unlid the tank to add water to it or add water from the side filler nozzle. After tightening the tank lid, install the water tank on the base and it can be used normally.
 About how to drain ponding water on the base: The humidifier uses a ultrasonic atomizer to break up the liquid water into a water mist by vibration. The tank is only a transient water storage tool. All sinks in the humidifier base will accumulate water. Please use it at ease.
 About how to adjust the fog volume: The humidifier can adjust the size of the mist. If there is water around the machine during use, this shows that the indoor humidity is too high. Please adjust the mist volume moderately.

User Guide



Interface instruction

The product contains a white digital tube display screen, 4 touch keys; POWER / MIST; HUMIDITY; TIMER; UV.
 After plugging in the power, the machine sounds "click" and then enters the standby mode, the standby indicator is active.
POWER/MIST key: press this key: 1. The machine sounds "click" and then works. It is in high mist by default, the corresponding indicator is on, the screen automatically displays the current ambient humidity with a humidity symbol active simultaneously.
 2. After the machine defaults to High mist, every time you press the Mist, it cycles from mid, low mist to OFF. Every time you select one position, the corresponding mist indicator will be active and the click will be sound accordingly every time you press it.



(Note: Long press the POWER / MIST key for 3 s on boot, the display goes out and the water tank light goes out; press any key again, the display goes on and the water tank light is active.)

TIMER key: The timer function is defaulted to OFF after the machine is activated. Tap the Timer key during normal operation. The timer settings are entered and switched over as shown in the flow chart. After presetting the time, the time flashes for 3 s, and the humidifier enters the timer work mode, timer icon is on, and then the current humidity value is displayed in the numerical display area; when the preset time is ended, the machine will enter the standby state; if you need to cancel the timer, press the TIMER key, reset the timer value to 00 which flashes for 3 s, then the timer is off, and the timer icon goes out.



HUMIDITY key: The default humidity function is switched off on boot. Tap the HUMIDITY key under normal operation, the humidity setting function is activated and switched according to the following flow chart. After the desired humidity value is preset, the system enters humidity after the value flashes for 3 s. At this time, the corresponding constant humidity mode symbol, humidity value, and humidity unit symbol are active; to cancel humidity mode symbol, humidity value,

and humidity unit symbol are active; to cancel humidity mode, you can adjust the humidity value to -- which flashes for 3 s, then icon goes out.



Note: After the humidity is switched on, the machine defaults to operate at high position until it has reaches the preset humidity. Then the machine returns to the standby state; when the humidity is lower than the preset value, the machine enables the humidification function again.

UV key: press this key, the UV will be active; press the UV again to turn it off, the corresponding icon on the display will light up.

Water shortage protection: when the water tank is short of water, the buzzer beeps three "tickings" to alarm once, the red indicator on the display for water shortage is on (flashes), the display stays on (displays the current ambient temperature and humidity). When water is added to the tank, the water shortage indicator will be inactive and the machine restores the normal working state.

Precautions

- 1) The power voltage must be consistent with the rated value of this product. If not, do not use the product and contact the dealer;
- 2) After receiving the humidifier, please stand it for 30 minutes at room temperature before use to prevent the sudden change of temperature caused the damage of the water tank;
- 3) Please operate it at normal room temperature (5 °C - 40C);
- 4) Place it in a flat place, and avoid tilting it;
- 5) Do not put the humidifier directly on the wooden floor. Otherwise it will be damaged by moisture and deformation of wooden floor;
- 6) Keep the humidifier at 2 m away from furniture and electrical appliances to avoid getting damp;
- 7) Keep it far away from heat sources, avoid direct sunlight;
- 8) Never inject hot water above 40 °C into the water tank and sink to avoid damage to the machine body;
- 9) Never allow water to flow into the body from the air outlet. If there is water on the body, please wipe it dry with a dry cloth to avoid damage to the machine;
- 10) When the room is below 0 °C, please bleed off the water tank and the sink to avoid damage to the machine due to freezing;
- 11) Do not expose metal products to chemicals. Put the detergent into the sink, otherwise there will be phenomenon of poor atomization;
- 12) Turn off the power and unplug it before bleeding off the water in the sink;
- 13) If it is necessary to move, clean, or add water to, the humidifier, the power must be disconnected and it is unplugged; the machine must not be moved around at will when working;
- 14) It is strictly forbidden to inject water into the mist and air outlets;
- 15) When cleaning, please avoid water entering the appliance;
- 16) Do not disassemble the original parts of the body arbitrarily.